

BARITONE (TREBLE CLEF)

MISSOURI BANDMASTERS ASSOCIATION

MISSOURI ALL-STATE BAND AUDITION MATERIALS

Scales: All Scales are to be MEMORIZED.
Prepare them all **slurred** and **tongued** sixteenth notes at 88 BPM.
Scales should be performed ascending and descending.
Scales given are the starting tone. DO NOT TRANSPOSE.

**All scales are to be prepared as written on
the required scale sheet.**

Chromatic: Perform the Chromatic Scale EXACTLY as written.

Major Scales: C G D A E B/Cb F#/Gb C#/Db Ab Eb Bb F

Minor Scales: a e b f# c# g#/ab d#/eb a#/bb f c g d

BARITONE (TREBLE CLEF)

SET IV

<i>Arban</i>	p. 21	#47
	p. 24	#9
	p. 56	#69 – Lines 3 (Bb), 9 (E), & 11 (D)
	p. 189	#138
	p. 285	#1 – First 7 lines (to key change)
	p. 313	#4 – Lines 6, 7, & 8

IMPORTANT DATES:

All-District Auditions @ Carthage HS	November 7, 2023
All-State Auditions @ Hickman HS, Columbia, MO	December 2, 2023
All-District Honor Band Rehearsal @ Joplin HS	January 12, 2024
All-District Honor Band Rehearsal @ Joplin HS	January 13, 2024
All-District Honor Band @ Joplin HS	January 13, 2024

*** Students must be able to attend all dates in order to audition for District Honor Band.**



MISSOURI ALL-STATE-BAND AUDITION SCALES

to be played at a minimum tempo of quarter note = 88

Treble Clef Baritone

Chromatic Scale

Musical notation for the Chromatic Scale, consisting of two staves. The first staff shows the ascending scale from C4 to C5, and the second staff shows the descending scale from C5 to C4. The notes are: C, C#, D, D#, E, E#, F, F#, G, G#, A, A#, B, B#, C.

Missouri ASB Major Scales

C Major Scale

Musical notation for the C Major Scale, ascending and descending, in treble clef.

G Major Scale

Musical notation for the G Major Scale, ascending and descending, in treble clef.

D Major Scale

Musical notation for the D Major Scale, ascending and descending, in treble clef.

A Major Scale

Musical notation for the A Major Scale, ascending and descending, in treble clef.

E Major Scale

Musical notation for the E Major Scale, ascending and descending, in treble clef.

B Major Scale**Cb Major Scale****F# Major Scale****Gb Major Scale****C# Major Scale****Db Major Scale****Ab Major Scale****Eb Major Scale**

Bb Major Scale



F Major Scale

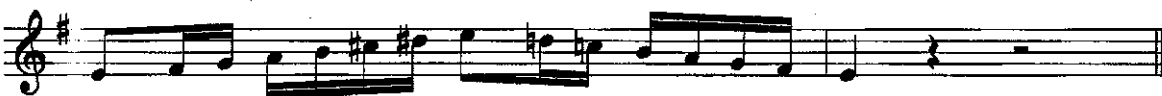


Missouri ASB Melodic Minor Scales

A Melodic Minor



E Melodic Minor



B Melodic Minor

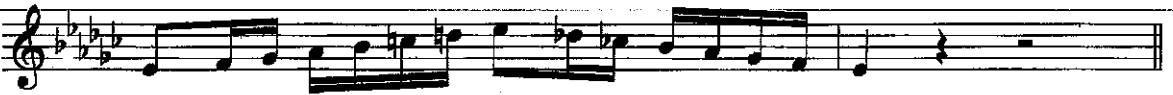


F# Melodic Minor



C# Melodic Minor

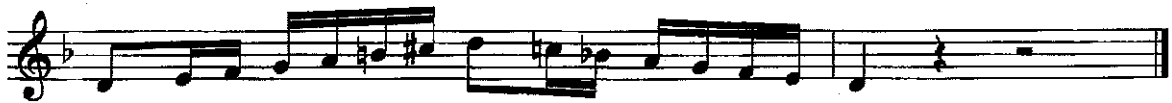


G# Melodic Minor**Ab Melodic Minor****D# Melodic Minor****Eb Melodic Minor****A# Melodic Minor****Bb Melodic Minor****F Melodic Minor****C Melodic Minor**

G Melodic Minor



D Melodic Minor



♩ = 72 - 112 (47-49)

47.

♩ = 116

9.

Arban

p. 56

#69 – Line 3 (Bb)



Arban

p. 56

#69 – Line 9 (E)



Arban

p. 56

#69 – Line 11 (D)



Arban

p. 189

#138

138. $\text{♩} = 108 - 120$

Tu tu ku tu tu tu tu tu tu tu tukutu tu tu tu tukutu tu tu tukutu tu tu

Fine.

D.C.

14 CHARACTERISTIC STUDIES

Start
1. Allegro moderato. ♩ = 96

mf
mp
tr
tr
Fine. f
f
p
mf

6. Andante ♩ = 84

p
mf
a tempo
poco rit.
p