

TROMBONE

MISSOURI BANDMASTERS ASSOCIATION

MISSOURI ALL-STATE BAND AUDITION MATERIALS

Scales: All Scales are to be MEMORIZED.
Prepare them all **slurred** and **tongued** sixteenth notes at 88 BPM.
Scales should be performed ascending and descending.
Scales given are the starting tone. DO NOT TRANSPOSE.

All scales are to be prepared as written on the required scale sheet.

Chromatic: Perform the Chromatic Scale EXACTLY as written.

Major Scales: C G D A E B/Cb F#/Gb C#/Db Ab Eb Bb F

Minor Scales: a e b f# c# g#/ab d#/eb a#/bb f c g d

TROMBONE

SET IV

<i>Arban</i>	p. 29	#50
	p. 52	#29 – ALL
	p. 126	#1 – Lines 3 (C), 8 (F), & 12 (A)
	p. 202	#143
	p. 231	#3 – First 8 lines (Brilliant Fantasy/Allegro Maestoso)
<i>Melodious Etudes</i>	p. 58	#43 – First Page Only

IMPORTANT DATES:

All-District Auditions @ Carthage HS	November 7, 2023
All-State Auditions @ Hickman HS, Columbia, MO	December 2, 2023
All-District Honor Band Rehearsal @ Joplin HS	January 12, 2024
All-District Honor Band Rehearsal @ Joplin HS	January 13, 2024
All-District Honor Band @ Joplin HS	January 13, 2024

*** Students must be able to attend all dates in order to audition for District Honor Band.**



MISSOURI ALL-STATE-BAND-AUDITION SCALES

to be played at a minimum tempo of quarter note = 88

Trombone

Chromatic Scale

A musical score for a chromatic scale in 4/4 time, written for Trombone. It consists of two staves. The first staff shows the ascending scale from C2 to B4, and the second staff shows the descending scale from B4 to C2. The notes are marked with sharp and flat symbols to indicate the correct chromatic path.

Missouri ASB Major Scales

C Major Scale

Musical notation for the C Major Scale in 4/4 time, written for Trombone. The scale is presented in a single staff, starting on C2 and ending on C4.

G Major Scale

Musical notation for the G Major Scale in 4/4 time, written for Trombone. The scale is presented in a single staff, starting on G2 and ending on G4.

D Major Scale

Musical notation for the D Major Scale in 4/4 time, written for Trombone. The scale is presented in a single staff, starting on D2 and ending on D4.

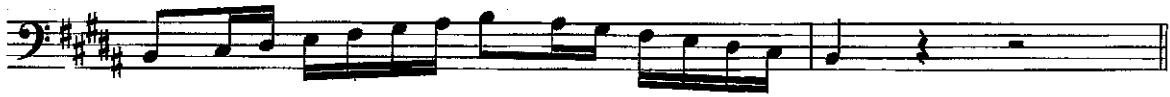
A Major Scale

Musical notation for the A Major Scale in 4/4 time, written for Trombone. The scale is presented in a single staff, starting on A2 and ending on A4.

E Major Scale

Musical notation for the E Major Scale in 4/4 time, written for Trombone. The scale is presented in a single staff, starting on E2 and ending on E4.

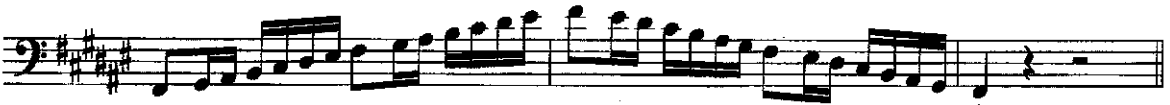
B Major Scale



Cb Major Scale



F# Major Scale



Gb Major Scale



C# Major Scale



Db Major Scale



Ab Major Scale



Eb Major Scale



Bb Major Scale



F Major Scale



Missouri ASB Melodic Minor Scales

A Melodic Minor



E Melodic Minor



B Melodic Minor



F# Melodic Minor



C# Melodic Minor



G# Melodic Minor

Musical notation for the G# Melodic Minor scale in bass clef. The scale is written in a single line, starting on G#2 and ascending to G#5. The notes are G#, A, B, C, D, E, F#, G#. The piece concludes with a final G#2 note and a whole rest.

A^b Melodic Minor

Musical notation for the A^b Melodic Minor scale in bass clef. The scale is written in a single line, starting on A^b2 and ascending to A^b5. The notes are A^b, B^b, C, D, E, F, G, A^b. The piece concludes with a final A^b2 note and a whole rest.

D# Melodic Minor

Musical notation for the D# Melodic Minor scale in bass clef. The scale is written in a single line, starting on D#2 and ascending to D#5. The notes are D#, E, F, G, A, B, C#, D#. The piece concludes with a final D#2 note and a whole rest.

E^b Melodic Minor

Musical notation for the E^b Melodic Minor scale in bass clef. The scale is written in a single line, starting on E^b2 and ascending to E^b5. The notes are E^b, F, G, A, B, C, D, E^b. The piece concludes with a final E^b2 note and a whole rest.

A# Melodic Minor

Musical notation for the A# Melodic Minor scale in bass clef. The scale is written in a single line, starting on A#2 and ascending to A#5. The notes are A#, B, C, D, E, F, G, A#. The piece concludes with a final A#2 note and a whole rest.

B^b Melodic Minor

Musical notation for the B^b Melodic Minor scale in bass clef. The scale is written in a single line, starting on B^b2 and ascending to B^b5. The notes are B^b, C, D, E, F, G, A, B^b. The piece concludes with a final B^b2 note and a whole rest.

F Melodic Minor

Musical notation for the F Melodic Minor scale in bass clef. The scale is written in a single line, starting on F2 and ascending to F5. The notes are F, G, A, B, C, D, E, F. The piece concludes with a final F2 note and a whole rest.

C Melodic Minor

Musical notation for the C Melodic Minor scale in bass clef. The scale is written in a single line, starting on C2 and ascending to C5. The notes are C, D, E, F, G, A, B, C. The piece concludes with a final C2 note and a whole rest.

G Melodic Minor



D Melodic Minor



50

D.C.

29

Arban

p. 126

#1 – Line 3 (C)



Arban

p. 126

#1 – Line 8 (F)



Arban

p. 126

#1 – Line 12 (A)



Arban

p. 202

#143



Brilliant Fantasy

Start Allegro maestoso

3

cresc *poco a poco*

ff *p*

rall *a tempo* *dolce*

f *stop*

No. 43 *Larghetto* (♩=69)

p

bb

bb