

TRUMPET

MISSOURI BANDMASTERS ASSOCIATION

MISSOURI ALL-STATE BAND AUDITION MATERIALS

Scales: All Scales are to be MEMORIZED.
Prepare them all **slurred** and **tongued** sixteenth notes at 88 BPM.
Scales should be performed ascending and descending.
Scales given are the starting tone. DO NOT TRANSPOSE.

**All scales are to be prepared as written on
the required scale sheet.**

Chromatic: Perform the Chromatic Scale EXACTLY as written.

Major Scales: C G D A E B/Cb F#/Gb C#/Db Ab Eb Bb F

Minor Scales: a e b f# c# g#/ab d#/eb a#/bb f c g d

TRUMPET

SET IV

<i>Arban</i>	p. 22	#50
	p. 47	#29 – ALL
	p. 125	#1 – Lines 3 (D), 8 (G), & 12 (B)
	p. 190	#143
	p. 213	#76
	p. 287	#3 – First 7 Lines (to key change)

IMPORTANT DATES:

All-District Auditions @ Carthage HS	November 7, 2023
All-State Auditions @ Hickman HS, Columbia, MO	December 2, 2023
All-District Honor Band Rehearsal @ Joplin HS	January 12, 2024
All-District Honor Band Rehearsal @ Joplin HS	January 13, 2024
All-District Honor Band @ Joplin HS	January 13, 2024

*** Students must be able to attend all dates in order to audition for District Honor Band.**



MISSOURI ALL-STATE-BAND AUDITION SCALES

to be played at a minimum tempo of quarter note = 88

Trumpet

Chromatic Scale

The chromatic scale is written on two staves of music. The first staff begins with a treble clef and a key signature of one sharp (F#), indicating the scale of D major. The second staff begins with a treble clef and a key signature of one flat (Bb), indicating the scale of Bb major. Both staves contain a sequence of eighth notes ascending and then descending chromatically across the scale.

Missouri ASB Major Scales

C Major Scale

The C major scale is written on a single staff of music with a treble clef and a key signature of no sharps or flats. The scale is presented in eighth notes, ascending and then descending.

G Major Scale

The G major scale is written on a single staff of music with a treble clef and a key signature of one sharp (F#). The scale is presented in eighth notes, ascending and then descending.

D Major Scale

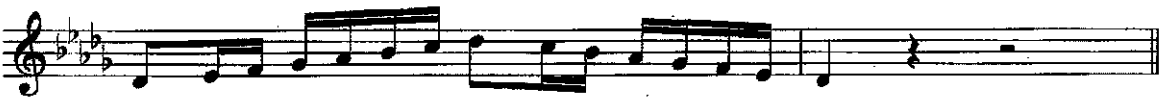
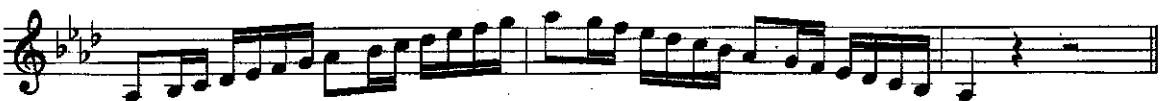
The D major scale is written on a single staff of music with a treble clef and a key signature of two sharps (F# and C#). The scale is presented in eighth notes, ascending and then descending.

A Major Scale

The A major scale is written on a single staff of music with a treble clef and a key signature of three sharps (F#, C#, and G#). The scale is presented in eighth notes, ascending and then descending.

E Major Scale

The E major scale is written on a single staff of music with a treble clef and a key signature of four sharps (F#, C#, G#, and D#). The scale is presented in eighth notes, ascending and then descending.

B Major Scale**Cb Major Scale****F# Major Scale****Gb Major Scale****C# Major Scale****Db Major Scale****Ab Major Scale****Eb Major Scale**

Bb Major Scale



F Major Scale

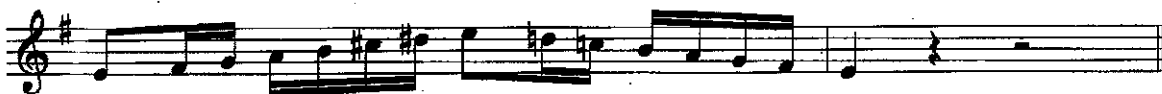


Missouri ASB Melodic Minor Scales

A Melodic Minor



E Melodic Minor



B Melodic Minor

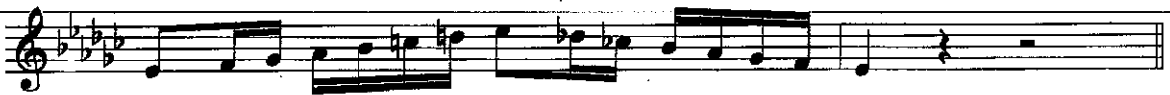
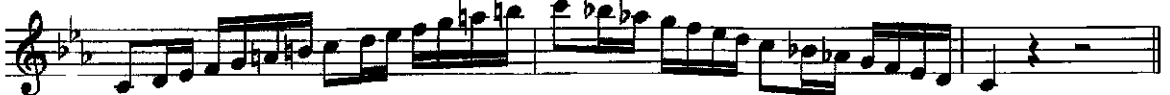


F# Melodic Minor

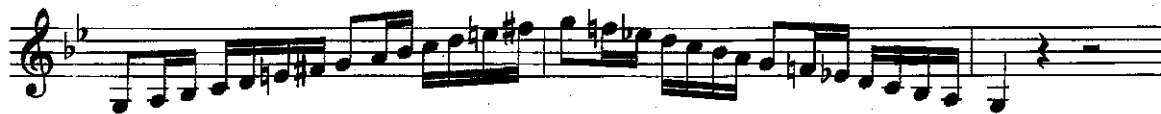


C# Melodic Minor



G# Melodic Minor**A^b Melodic Minor****D# Melodic Minor****E^b Melodic Minor****A# Melodic Minor****B^b Melodic Minor****F Melodic Minor****C Melodic Minor**

G Melodic Minor



D Melodic Minor



50. $\text{♩} = 60 - 116$

D. C.

29. $\text{♩} = 96$

ALL

Arban

p. 125

#1 – Line 3 (D)



Arban

p. 125

#1 – Line 8 (G)



Arban

p. 125

#1 – Line 12 (B)



Arban

p. 190

#143



Moderato Bellini.

76. *f* *rit.* *a tempo.*

Start Moderato. $\text{♩} = 86$

3. *mp* *p* *cresc.* *f* *dim.* *pp* *stop*