

## BASS CLARINET

# MISSOURI BANDMASTERS ASSOCIATION

## MISSOURI ALL-STATE BAND AUDITION MATERIALS

**Scales:** All Scales are to be MEMORIZED.  
Prepare them all **slurred** and **tongued** sixteenth notes at 88 BPM.  
Scales should be performed ascending and descending.  
Scales given are the starting tone. DO NOT TRANSPOSE.

**All scales are to be prepared as written on  
the required scale sheet.**

Chromatic: Perform the Chromatic Scale EXACTLY as written.

Major Scales: C G D A E B/Cb F#/Gb C#/Db Ab Eb Bb F

Minor Scales: a e b f# c# g#/ab d#/eb a#/bb f c g d

## BASS CLARINET

### SET IV

<i>21 Foundations Studies</i>	p. 16	#9
<i>Introducing the Alto or Bass Clarinet</i>	p. 13	#5
	p. 16	#5
	p. 20	#6
	p. 36	#2 slurred

### IMPORTANT DATES:

All-District Auditions @ Carthage HS	November 7, 2023
All-State Auditions @ Hickman HS, Columbia, MO	December 2, 2023
All-District Honor Band Rehearsal @ Joplin HS	January 12, 2024
All-District Honor Band Rehearsal @ Joplin HS	January 13, 2024
All-District Honor Band @ Joplin HS	January 13, 2024

**\* Students must be able to attend all dates in order to audition for District Honor Band.**



# MISSOURI ALL-STATE-BAND AUDITION SCALES

to be played at a minimum tempo of quarter note = 88

Bb Bass Clarinet

## Chromatic Scale

The chromatic scale is presented in three staves. The first staff shows the ascending scale from C2 to C3. The second staff shows the descending scale from C3 to C2. The third staff shows the ascending scale from C3 to C4. The notes are written in a Bb Bass Clarinet clef (treble clef with a flat on the first line) and include all accidentals necessary for the chromatic progression.

## Missouri ASB Major Scales

### C Major Scale

The C Major Scale is written on a single staff in a Bb Bass Clarinet clef. It consists of 13 notes: C, D, E, F, G, A, B, A, G, F, E, D, C. The notes are written in a treble clef with a flat on the first line.

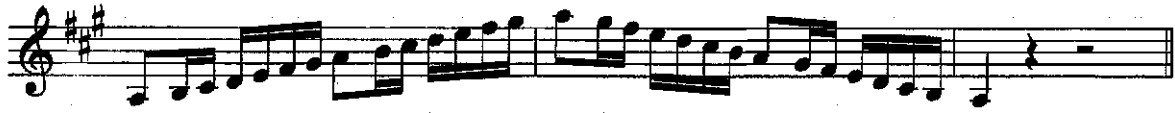
### G Major Scale

The G Major Scale is written on a single staff in a Bb Bass Clarinet clef. It consists of 13 notes: G, A, B, C, D, E, F#, E, D, C, B, A, G. The notes are written in a treble clef with a flat on the first line and a sharp on the second line.

### D Major Scale

The D Major Scale is written on a single staff in a Bb Bass Clarinet clef. It consists of 13 notes: D, E, F#, G, A, B, C#, B, A, G, F#, E, D. The notes are written in a treble clef with a flat on the first line and sharps on the second and sixth lines.

**A Major Scale**



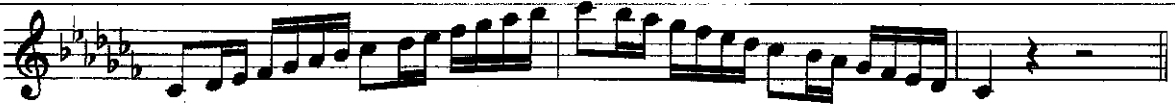
**E Major Scale**



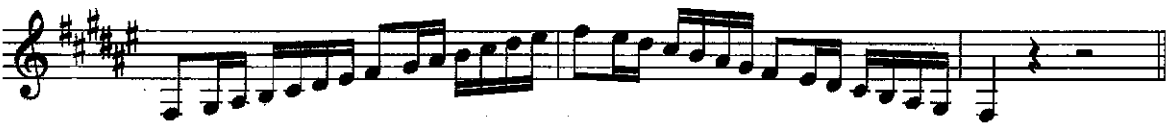
**B Major Scale**



**Cb Major Scale**



**F# Major Scale**



**Gb Major**



**C# Major Scale**



**Db Major Scale**



**Ab Major Scale**



**Eb Major Scale**



**Bb Major Scale**



**F Major Scale**



**Missouri ASB Melodic Minor Scales**

**A Melodic Minor**



**E Melodic Minor**



**B Melodic Minor****F# Melodic Minor****C# Melodic Minor****G# Melodic Minor****A $\flat$  Melodic Minor****D# Melodic Minor****E $\flat$  Melodic Minor**

**A# Melodic Minor**



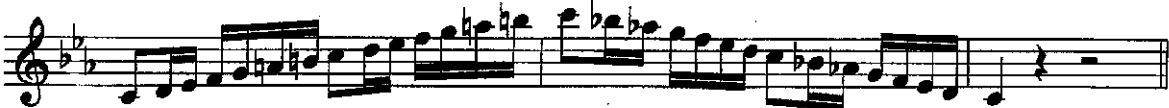
**Bb Melodic Minor**



**F Melodic Minor**



**C Melodic Minor**



**G Melodic Minor**



**D Melodic Minor**



Allegro non troppo

DOTZAUER

*p*

*cresc.*

*mf*

*dim.* (9)

*p*

*cresc.*

*mf*

(17)

*cresc.*

*f*

(25)

*dim.*

*p*

*dim. rall.*

*FLASS* *clarinet*

ETUDE IN A MINOR

Adagio

5

*p* *f* *p* *f* *p* *p*

*f* *f*

*p*

*f* *p* *f* *p*

SYNCOPIATION IN  $\text{♩}$

Moderato

Practice first in 4/4

5

*p*

*mf* *cresc.* *f*

*mp*

*p* *mf* *cresc.* *f*



ARPEGGIO STUDY

Musical score for Arpeggio Study, page 20. It consists of three staves of music in 3/4 time, marked Moderato. The first staff starts with a dynamic of *mf*. The second staff has a dynamic of *p*. The third staff has a dynamic of *f*. The music features arpeggiated chords and melodic lines.

Musical score for Scale in Thirds, page 36. It consists of two staves of music in 2/4 time, marked Scale in Thirds. The first staff has a circled number 2. The music features a scale in thirds.