

## ENGLISH HORN

# MISSOURI BANDMASTERS ASSOCIATION

## MISSOURI ALL-STATE BAND AUDITION MATERIALS

**Scales:** All Scales are to be MEMORIZED.  
Prepare them all **slurred** and **tongued** sixteenth notes at 88 BPM.  
Scales should be performed ascending and descending.  
Scales given are the starting tone. DO NOT TRANSPOSE.

**All scales are to be prepared as written on  
the required scale sheet.**

Chromatic: Perform the Chromatic Scale EXACTLY as written.

Major Scales: C G D A E B/Cb F#/Gb C#/Db Ab Eb Bb F

Minor Scales: a e b f# c# g#/ab d#/eb a#/bb f c g d

## ENGLISH HORN

### SET IV

<i>Selected Studies</i>	p. 20	D Major
<i>Advanced Method</i>	p. 17	#66
	p. 15	#58
	p. 15	#59
	p. 42	#24

### IMPORTANT DATES:

All-District Auditions @ Carthage HS	November 7, 2023
All-State Auditions @ Hickman HS, Columbia, MO	December 2, 2023
All-District Honor Band Rehearsal @ Joplin HS	January 12, 2024
All-District Honor Band Rehearsal @ Joplin HS	January 13, 2024
All-District Honor Band @ Joplin HS	January 13, 2024

**\* Students must be able to attend all dates in order to audition for District Honor Band.**



# MISSOURI ALL-STATE-BAND AUDITION SCALES

to be played at a minimum tempo of quarter note = 88

English Horn

## Chromatic Scale

The chromatic scale is presented in two staves of music. The first staff is in treble clef with a 4/4 time signature. It begins with a C4 and ascends chromatically through D4, E4, F4, G4, A4, B4, C5, D5, E5, F5, G5, A5, B5, and C6. The second staff is in bass clef and descends chromatically from C5 down to C4, following the same sequence of notes as the first staff.

## Missouri ASB Major Scales

### C Major Scale

The C Major Scale is written on a single treble clef staff in 4/4 time. The scale starts on middle C (C4) and ascends through D4, E4, F4, G4, A4, B4, and C5. It then descends through B4, A4, G4, F4, E4, D4, and ends on C4 with a quarter rest.

### G Major Scale

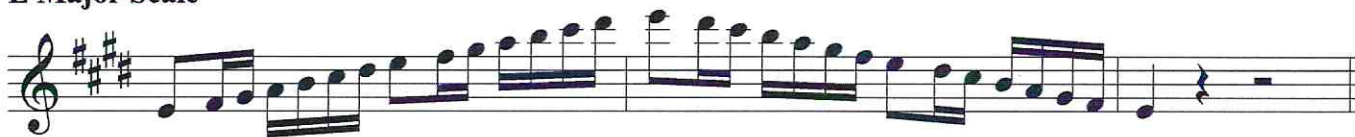
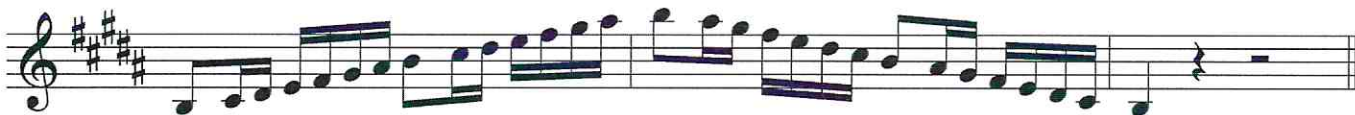
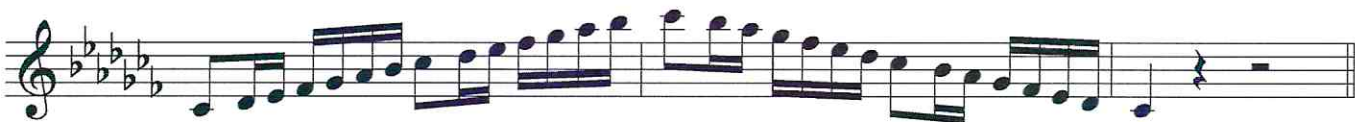
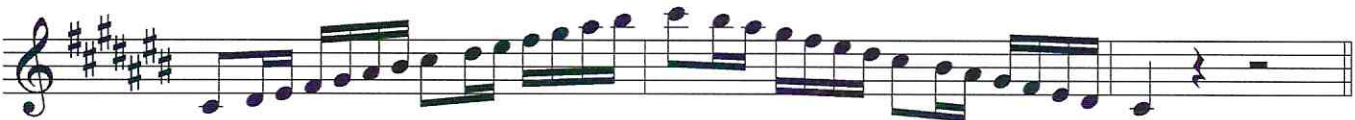
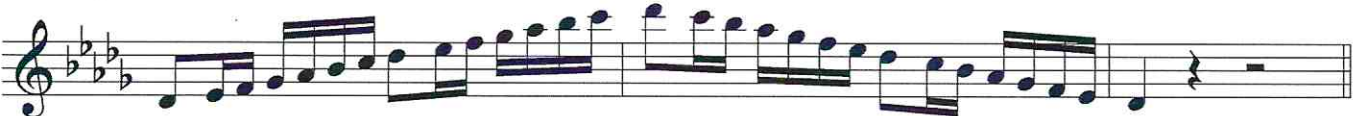
The G Major Scale is written on a single treble clef staff in 4/4 time. The key signature has one sharp (F#). The scale starts on G4 and ascends through A4, B4, C5, D5, E5, and F#5. It then descends through E5, D5, C5, B4, A4, and ends on G4 with a quarter rest.

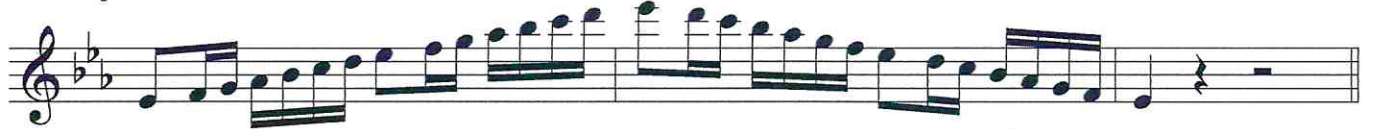
### D Major Scale

The D Major Scale is written on a single treble clef staff in 4/4 time. The key signature has two sharps (F# and C#). The scale starts on D4 and ascends through E4, F#4, G4, A4, B4, and C#5. It then descends through B4, A4, G4, F#4, E4, and ends on D4 with a quarter rest.

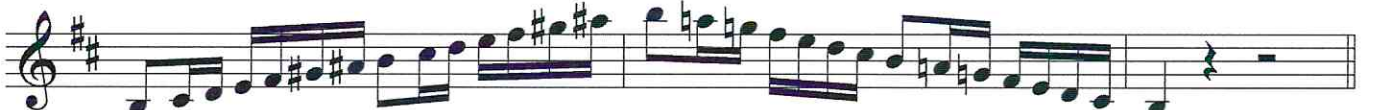
### A Major Scale

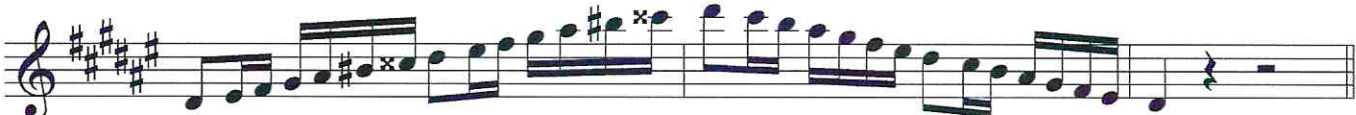
The A Major Scale is written on a single treble clef staff in 4/4 time. The key signature has three sharps (F#, C#, and G#). The scale starts on A4 and ascends through B4, C#5, D5, E5, and F#5. It then descends through E5, D5, C#5, B4, and ends on A4 with a quarter rest.

**E Major Scale****B Major Scale****Cb Major Scale****F# Major Scale****Gb Major Scale****C# Major Scale****Db Major Scale**

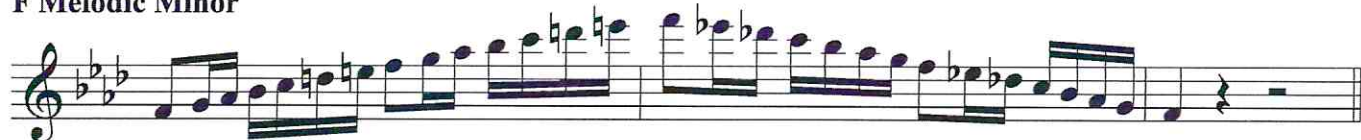
**Ab Major Scale****Eb Major Scale****Bb Major Scale****F Major Scale**

## Missouri ASB Melodic Minor Scales

**A Melodic Minor****E Melodic Minor****B Melodic Minor**

**F# Melodic Minor****C# Melodic Minor****G# Melodic Minor****A $\flat$  Melodic Minor****D# Melodic Minor****E $\flat$  Melodic Minor****A# Melodic Minor**



**Bb Melodic Minor****F Melodic Minor****C Melodic Minor****G Melodic Minor****D Melodic Minor**

Moderato

*mf* *grazioso*

*p*

*mf*

*f* *animato*

*f* *second time p*

*p* *rit.* *mf* *a tempo*

*p*

*mf*

*mf*

*p*

95 060 Thirds

66

Common chord

58

Diminished 7th chord

59



Allegro maestoso

NIEMANN

24

*f* *mf* *f* *mf*

*p cantabile*

*mf* *p leggiero*

*p* *f* *p* *f*