

OBOE

MISSOURI BANDMASTERS ASSOCIATION

MISSOURI ALL-STATE BAND AUDITION MATERIALS

Scales: All Scales are to be MEMORIZED.
Prepare them all **slurred** and **tongued** sixteenth notes at 88 BPM.
Scales should be performed ascending and descending.
Scales given are the starting tone. DO NOT TRANSPOSE.

**All scales are to be prepared as written on
the required scale sheet.**

Chromatic: Perform the Chromatic Scale EXACTLY as written.

Major Scales: C G D A E B/Cb F#/Gb C#/Db Ab Eb Bb F

Minor Scales: a e b f# c# g#/ab d#/eb a#/bb f c g d

OBOE

SET IV

<i>Selected Studies</i>	p. 20	D Major
<i>Advanced Method</i>	p. 17	#66
	p. 15	#58
	p. 15	#59
	p. 42	#24

IMPORTANT DATES:

All-District Auditions @ Carthage HS	November 7, 2023
All-State Auditions @ Hickman HS, Columbia, MO	December 2, 2023
All-District Honor Band Rehearsal @ Joplin HS	January 12, 2024
All-District Honor Band Rehearsal @ Joplin HS	January 13, 2024
All-District Honor Band @ Joplin HS	January 13, 2024

*** Students must be able to attend all dates in order to audition for District Honor Band.**



MISSOURI ALL-STATE-BAND AUDITION SCALES

to be played at a minimum tempo of quarter note = 88

Oboe

Chromatic Scale

The chromatic scale is written on two staves in 4/4 time. The first staff contains the ascending scale from C4 to C5, and the second staff contains the descending scale from C5 to C4. Each note is marked with a sharp or flat sign to indicate its chromatic movement.

Missouri ASB Major Scales

C Major Scale

The C major scale is written on a single staff in 4/4 time, starting on middle C (C4) and ascending to C5. The notes are C, D, E, F, G, A, B, C.

G Major Scale

The G major scale is written on a single staff in 4/4 time, starting on G4 and ascending to G5. The notes are G, A, B, C, D, E, F#, G.

D Major Scale

The D major scale is written on a single staff in 4/4 time, starting on D4 and ascending to D5. The notes are D, E, F#, G, A, B, C#, D.

A Major Scale

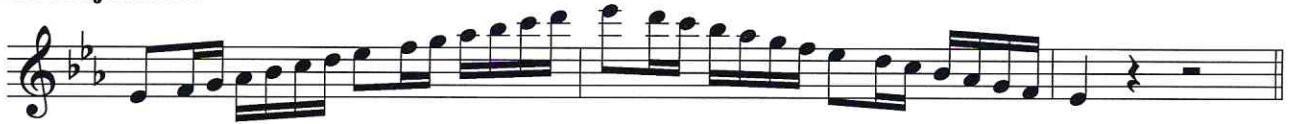
The A major scale is written on a single staff in 4/4 time, starting on A4 and ascending to A5. The notes are A, B, C#, D, E, F#, G#, A.

E Major Scale**B Major Scale****Cb Major****F# Major Scale****Gb Major Scale****C# Major Scale****Db Major Scale**

Ab Major Scale



Eb Major Scale



Bb Major Scale



F Major Scale



Missouri ASB Melodic Minor Scales

A Melodic Minor



E Melodic Minor



B Melodic Minor



Musical notation for the B Melodic Minor scale, starting on B4 and ending on B5. The scale is written in treble clef with a key signature of two sharps (F# and C#). The notes are B, C, D, E, F#, G#, A, B, C, D, E, F#, G#, A, B.

F# Melodic Minor



Musical notation for the F# Melodic Minor scale, starting on F#4 and ending on F#5. The scale is written in treble clef with a key signature of three sharps (F#, C#, G#). The notes are F#, G, A, B, C, D, E, F#, G, A, B, C, D, E, F#.

C# Melodic Minor



Musical notation for the C# Melodic Minor scale, starting on C#4 and ending on C#5. The scale is written in treble clef with a key signature of four sharps (F#, C#, G#, D#). The notes are C#, D, E, F#, G, A, B, C#, D, E, F#, G, A, B, C#.

G# Melodic Minor



Musical notation for the G# Melodic Minor scale, starting on G#4 and ending on G#5. The scale is written in treble clef with a key signature of five sharps (F#, C#, G#, D#, A#). The notes are G#, A, B, C, D, E, F, G#, A, B, C, D, E, F, G#.

A \flat Melodic Minor



Musical notation for the A \flat Melodic Minor scale, starting on A \flat 4 and ending on A \flat 5. The scale is written in treble clef with a key signature of three flats (B \flat , E \flat , A \flat). The notes are A \flat , B \flat , C, D, E \flat , F, G, A \flat , B \flat , C, D, E \flat , F, G, A \flat .

D# Melodic Minor



Musical notation for the D# Melodic Minor scale, starting on D#4 and ending on D#5. The scale is written in treble clef with a key signature of six sharps (F#, C#, G#, D#, A#, E#). The notes are D#, E, F, G, A, B, C, D#, E, F, G, A, B, C, D#.

E \flat Melodic Minor



Musical notation for the E \flat Melodic Minor scale, starting on E \flat 4 and ending on E \flat 5. The scale is written in treble clef with a key signature of four flats (B \flat , E \flat , A \flat , D \flat). The notes are E \flat , F, G, A, B \flat , C, D, E \flat , F, G, A, B \flat , C, D, E \flat .

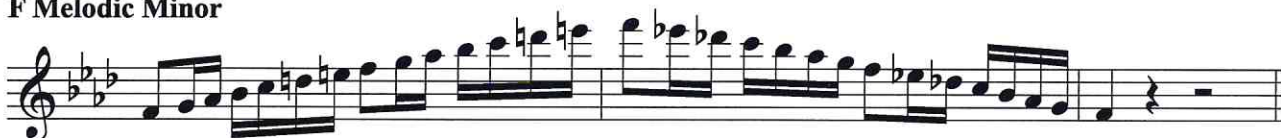
A# Melodic Minor



Bb Melodic Minor



F Melodic Minor



C Melodic Minor



G Melodic Minor



D Melodic Minor



Moderato

mf *grazioso*

p

mf

f *animato*

f *second time p*

p *rit.* *mf* *a tempo*

p

mf

p

95 060 Thirds

66

Common chord

58

Diminished 7th chord

59

Allegro maestoso

NIEMANN

24

f *mf* *f* *mf*

p cantabile

mf *p leggiero*

p *f* *p* *f*